



This notice must be read in conjunction with the FPS Installation Guide Ver 1 June 2024 and FPS Technical Manual.  
By adhering to these requirements, the 'systems' performance and warranty will be satisfied.

## WALL INSTALLATION

### Euroband S 60mm Green Tape

#### Vertical Joints, Penetration Seals, & Patching Tape

- » All vertical joints need to be taped with a minimum 60mm overlap.
- » Holes, tears, and exposed staples need to be repaired when practicable.
- » Avoid vertical joints closer than 40mm from corners and openings.
- » Use the provided green spatulas to ensure adhesion.
- » Can be installed in very extreme conditions (-40°C to +100°C).
- » Split backing for easy install.
- » For more information, please refer to FPS Installation Guide.



### Euroband D/S Black Butyl Tape

#### Foundation Tape

- » Ensure foundation substrate is clean, dry, and free from anything that may damage the membrane (staples, nails, protrusions).
- » Apply EDSB directly below the bottom plate and allow membrane to overhang 35mm below the bottom plate.
- » Don't remove the backing on the tape right away. Allow for dust and debris to clear away before internal linings proceed.
- » For more information, please refer to FPS Installation Guide.



### Euroband S 120/180mm Green Tape

#### Corner Tape For Window & Door Openings

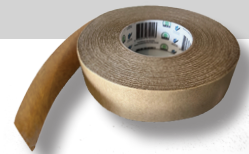
- » Use ES120 for 90mm timber/ steel framing.
- » Use ES180 for 140mm framing / SIP panels.
- » Ensure a triangular fillet of tape is fitted to all external corners of all openings before a 400mm length of sill tape is installed.
- » Only cut openings when joinery is ready to install.
- » Use the provided green spatulas to ensure adhesion.
- » For more information, please refer to FPS Installation Guide.



### Euroband D/S Brown Tape

#### Horizontal Joints

- » All horizontal joints need to be taped with a minimum 60mm overlap.
- » When possible, always apply EDS Brown to the bottom edge of the underside of the overlapping membrane. Press in place with a spatula.
- » Allow at least an hour after applying the EDS Brown to the membrane before removing the backing to ensure it cures.
- » Use the provided green spatulas to ensure adhesion.
- » For more information, please refer to FPS Installation Guide.



#### Corner Taping Steps:



Apply fillet



Apply pressure



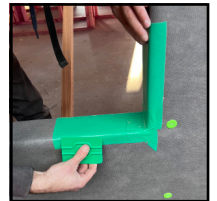
Apply 400mm strip



Apply pressure

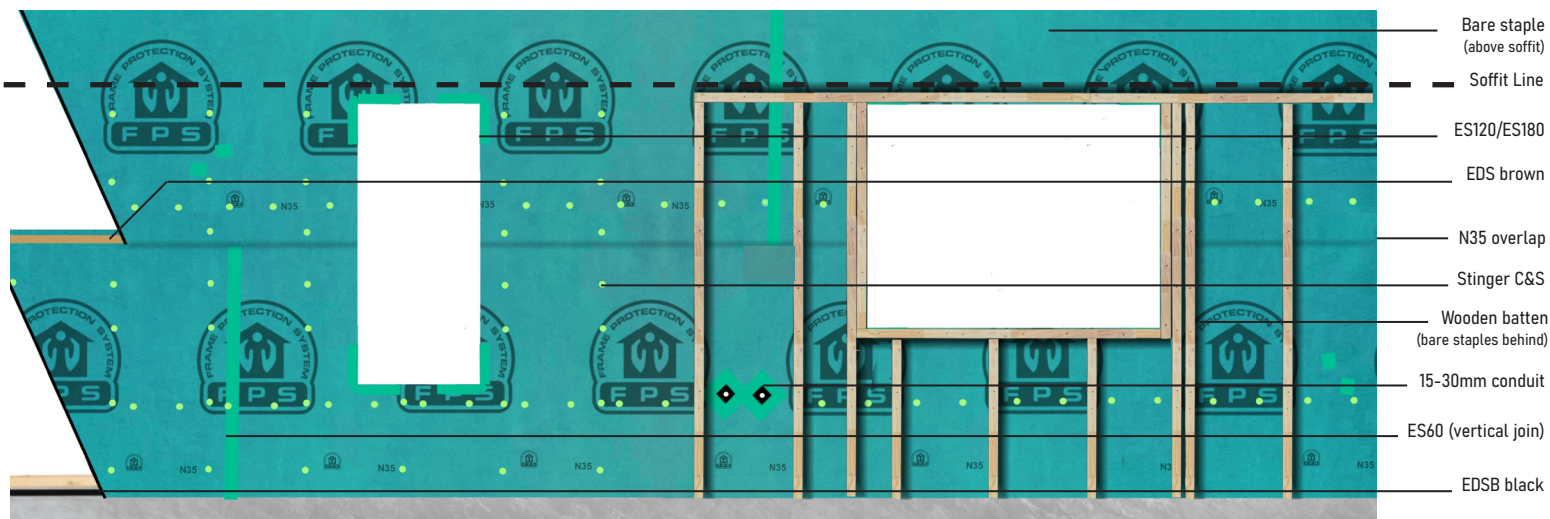


Wrap around front face



Apply pressure

## N35 Elevation



## Stinger Caps & Staples

### Timber Fixings

- » All fixings exposed to the weather must be capped & stapled.
- » Fixings above a soffit line or behind an overlap don't require a cap.
- » When fixing behind a cavity batten, please refer to the table below to find where and when to use the appropriate fixing.
- » Fasten battens promptly to ensure weathertightness, and to avoid wind blow out.
- » For more information, please refer to FPS Installation Guide.

## Caps & Screws

### Steel Fixings

- » Light weight steel framing requires the use of self tapping Caps and Screws.
- » Caps & Screws to be installed as per the Caps & Staples methodology.
- » For more information, please refer to FPS Installation Guide.



### Cap & Staple Chart

| Wind Zones | Spacings | Batten Types             | Fixings                                     |
|------------|----------|--------------------------|---|
| Low        | 300mm    | Brick Veneer             | Only C&S's                                  |
| Medium     | 250mm    | Vertical (wooden)        | Bare staples behind batten, C&S's on dwangs |
| High       | 200mm    | Horizontal (castellated) | No fixings behind batten, C&S's on studs    |
| Very High  | 150mm    | Horizontal (plastic)     | No fixings behind batten, C&S's on studs    |
| Extra High | 100mm    | Vertical (polystyrene)   | Only C&S's                                  |

## Conduit Seals

### Pipe/ Penetration Seals

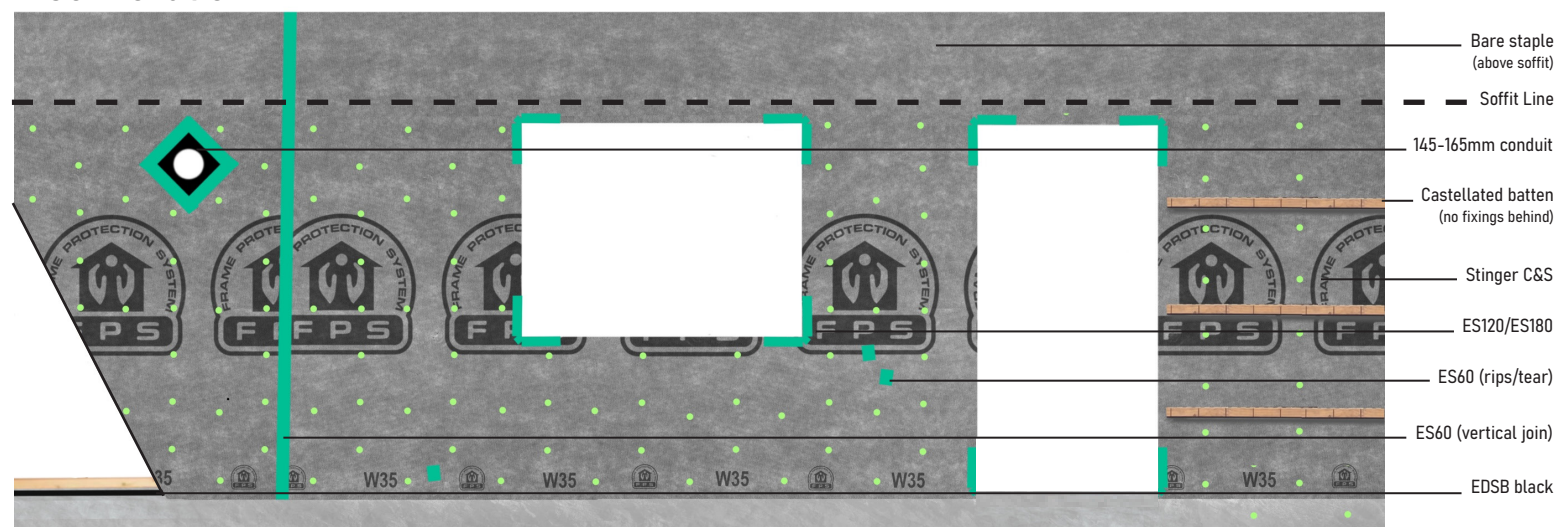
- » The use of non FPS Conduit Seals is prohibited.
- » All penetrations through the membrane needs to be fitted with the appropriate FPS Conduit Seal.
- » Conduit Seals are to be installed with a point facing upwards. Apply ES60 evenly to all four sides and secure to the membrane.
- » Use the provided green spatulas to ensure adhesion.
- » Please refer to the tape preparation instructions on the seals pack.
- » For more information, please refer to FPS Installation Guide.



### Conduit Seal Sizes

| Seal Size         | Penetration Size           | Pack Size |
|-------------------|----------------------------|-----------|
| » (100mm x 100mm) | (15 - 30mm conduit seal)   | (10 pack) |
| » (100mm x 100mm) | (28 - 40mm conduit seal)   | (5 pack)  |
| » (100mm x 100mm) | (38 - 55mm conduit seal)   | (5 pack)  |
| » (125mm x 125mm) | (Heat Pump conduit seal)   | (3 pack)  |
| » (150mm x 150mm) | (48 - 75mm conduit seal)   | (5 pack)  |
| » (150mm x 150mm) | (74 - 95mm conduit seal)   | (5 pack)  |
| » (200mm x 200mm) | (95 - 120mm conduit seal)  | (single)  |
| » (200mm x 200mm) | (120 - 145mm conduit seal) | (single)  |
| » (250mm x 250mm) | (145 - 165mm conduit seal) | (single)  |

## W35 Elevation



**Note:** All tradespeople, contractors, and installers must only use specified products, and must maintain the 'systems' integrity at all times. Any substitution of product or poor workmanship is not acceptable.

[www.frameprotection.co.nz](http://www.frameprotection.co.nz)

### Need help?



Contact your local rep



# Install Notes